

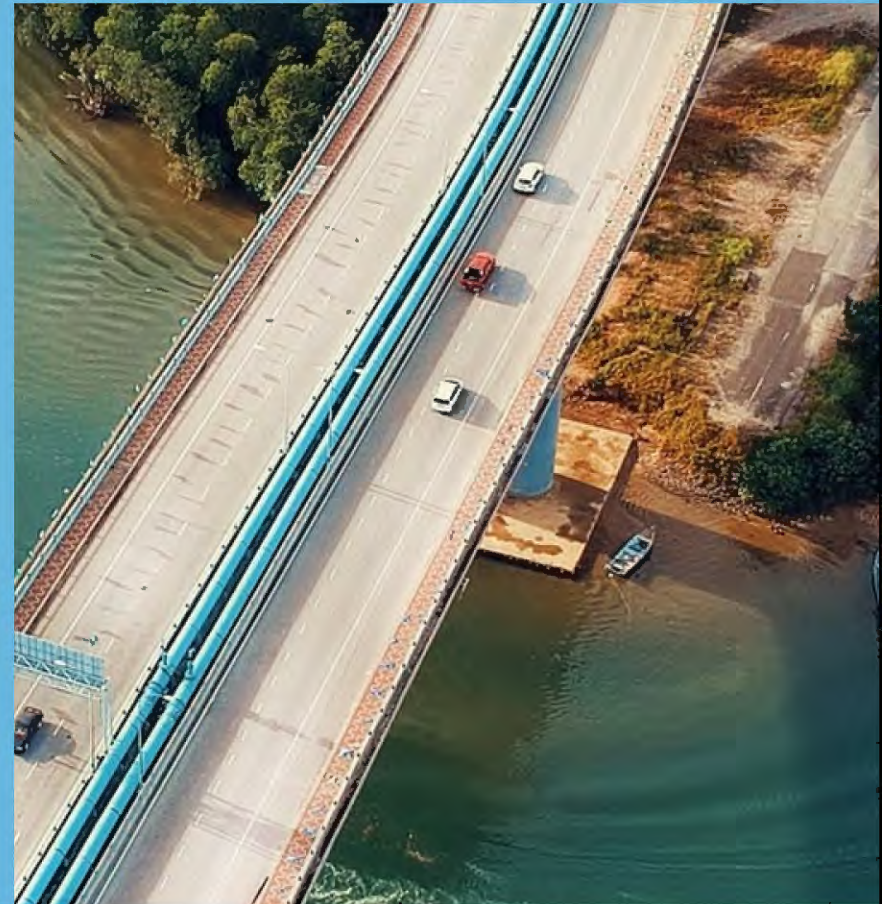
activu<sup>®</sup>

EVENT-DRIVEN INTELLIGENT VISUALIZATION



activu<sup>®</sup>

Every day, **drivers** travel  
over **1 Billion** miles on  
roads managed and  
monitored with  
Activu systems





Activu users monitor  
over **126,000 miles** of  
Transmission Lines.

Enough to circle the  
Earth **five times**.





An aerial night view of a city skyline, likely New York City, with numerous skyscrapers and buildings illuminated with lights. The lights are primarily yellow and white, with some blue and red accents. The sky is dark, and the city lights create a vibrant, glowing effect. The image is used as a background for the text.

activu<sup>®</sup>



Activu helps energy companies keep the lights on for **260,000,000 U.S. customers.**

activu<sup>®</sup>

A safe and efficient journey  
for more than **2 Billion**  
annual **transit passengers**  
depends on Activu.





activu®


Activu helps Emergency Operations protect the safety of over **100 million** metropolitan area citizens



activu®

Activu is critical for  
protecting the security of **330  
million Americans,**  
& more around the world



The logo for Activu, featuring the word "activu" in a white, lowercase, sans-serif font. A small yellow dot is positioned above the letter 'i'. The logo is centered on a dark red background with a pattern of glowing, wavy lines.A small yellow dot is positioned above the text.

Activu helps companies visualize and defend more than **91 billion** cyber attacks annually



activu®

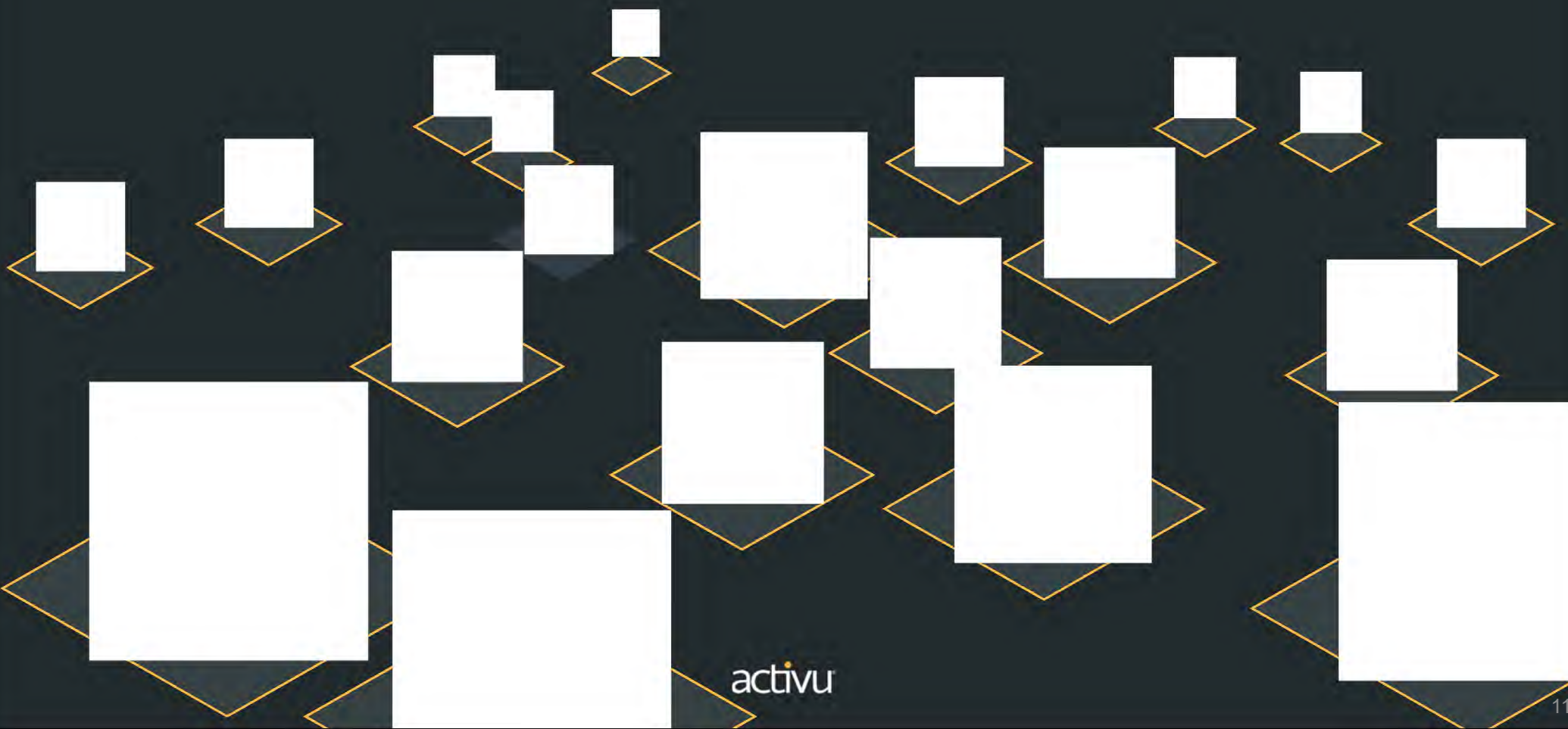


Every year, **814 million** air passengers & crew pass through security systems monitored through Activu.

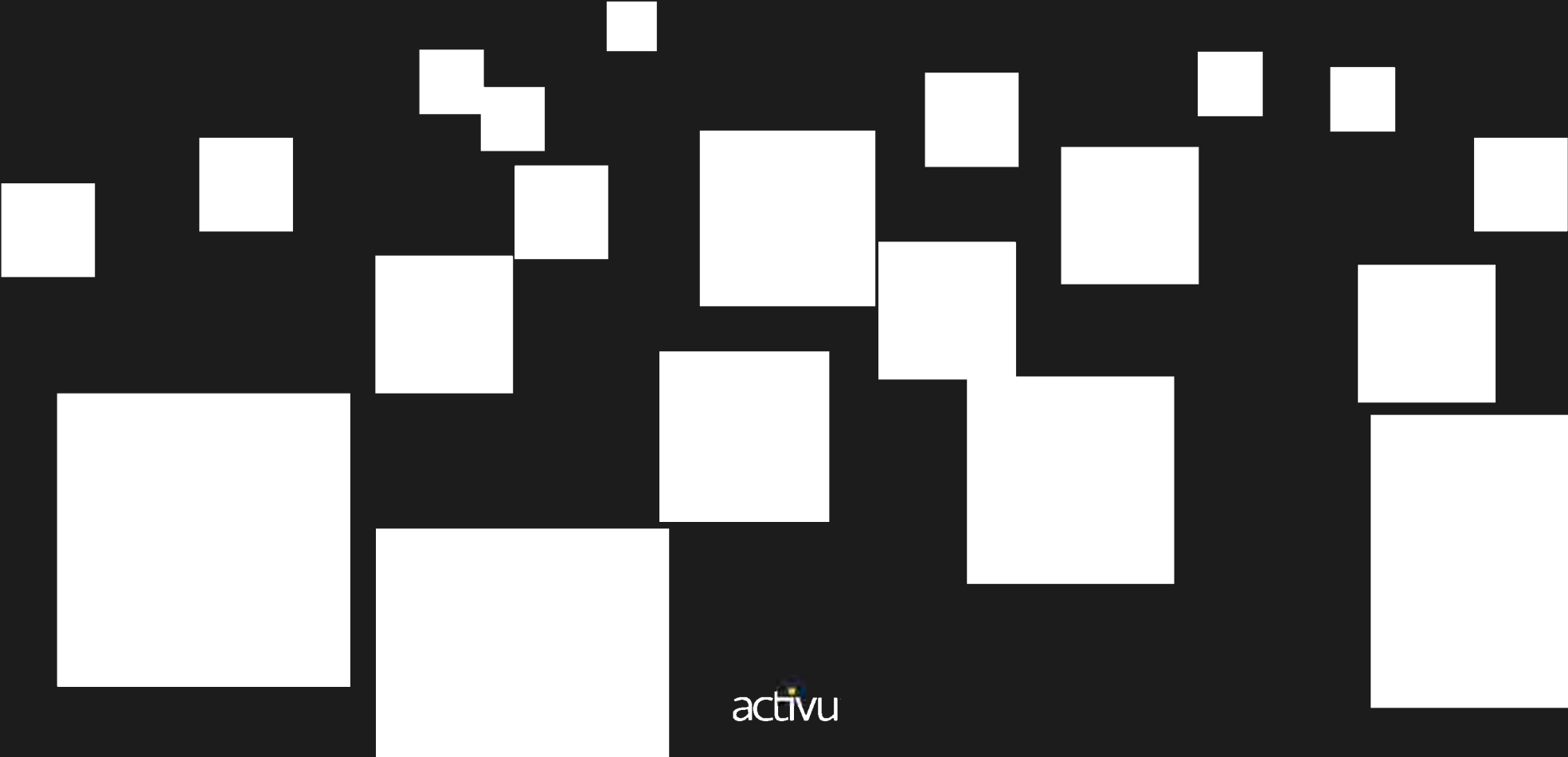


Activu software & solutions  
combine any **critical visual information**  
into a **shareable operating picture**  
for collaborative teams & control rooms,  
improving incident **response**,  
**decision-making**, & **management**.

Information environments are often unnecessarily chaotic



Information needs to be organized in order to be useful





# Activu vis|ability

Pervasive, consistent  
sharing

Software platform  
running on standard  
COTS OS and hardware

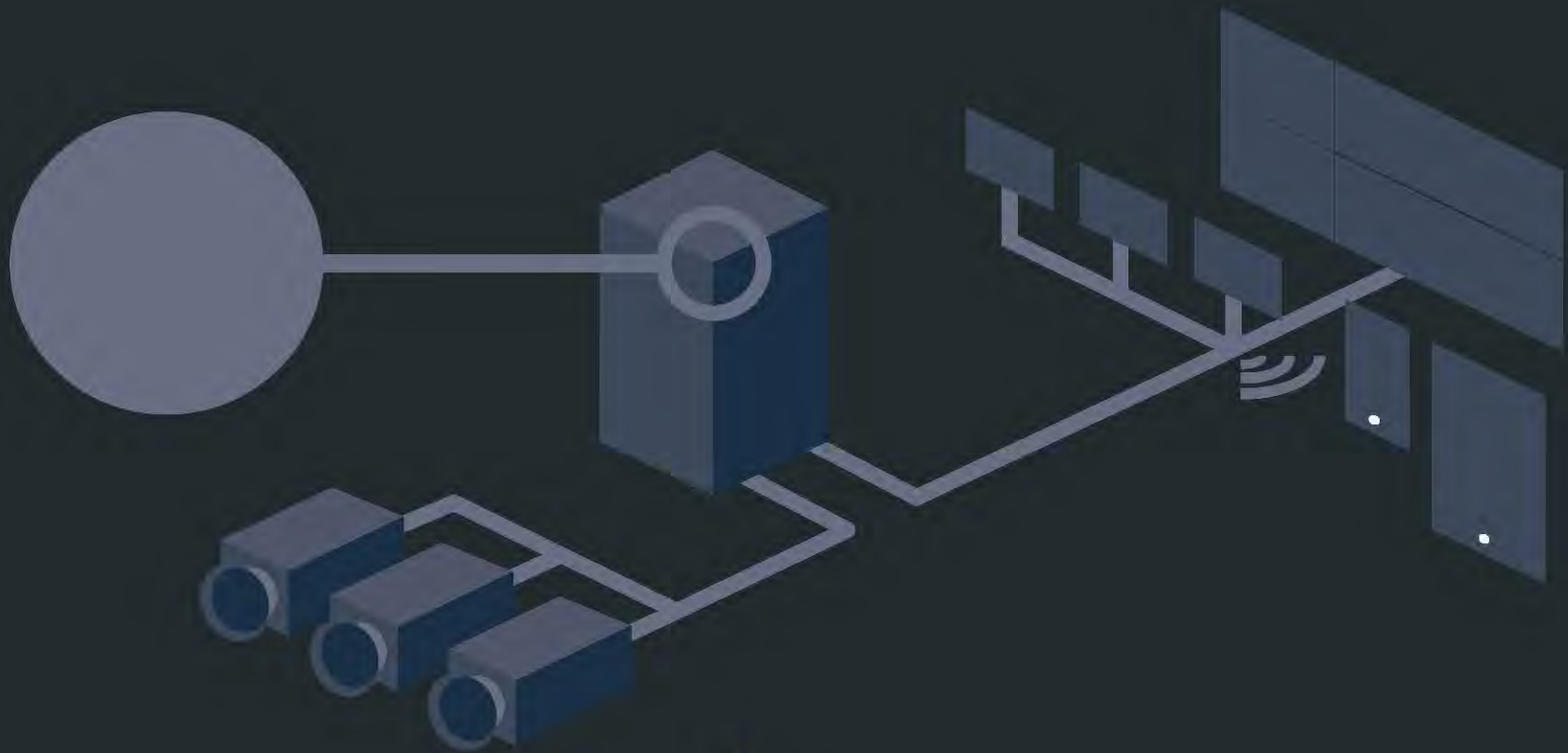


Communication  
fabric provides  
easy access to all  
your critical  
information

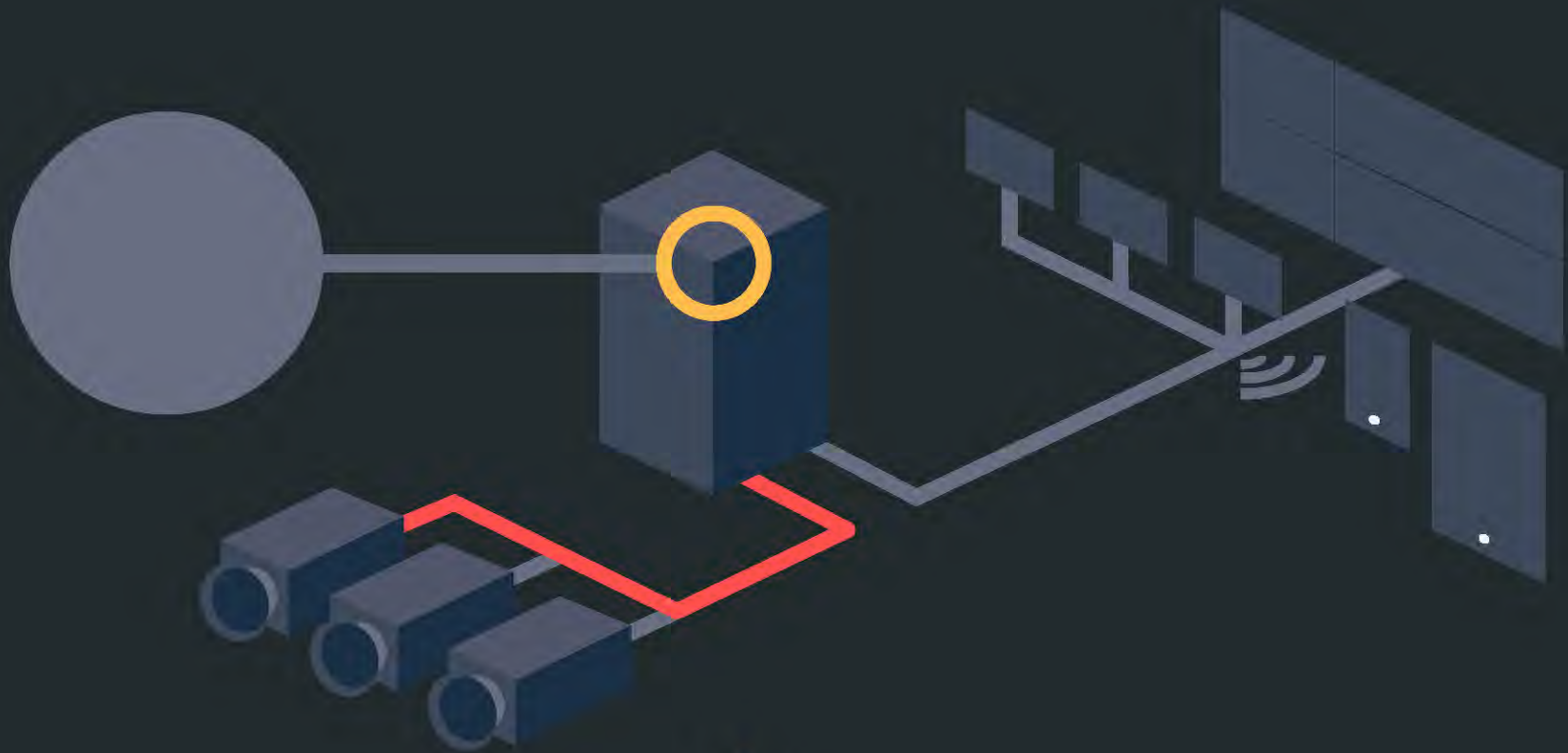
Automated Tools

activu

# vis|ability Link: Event-Driven Intelligent Visualization

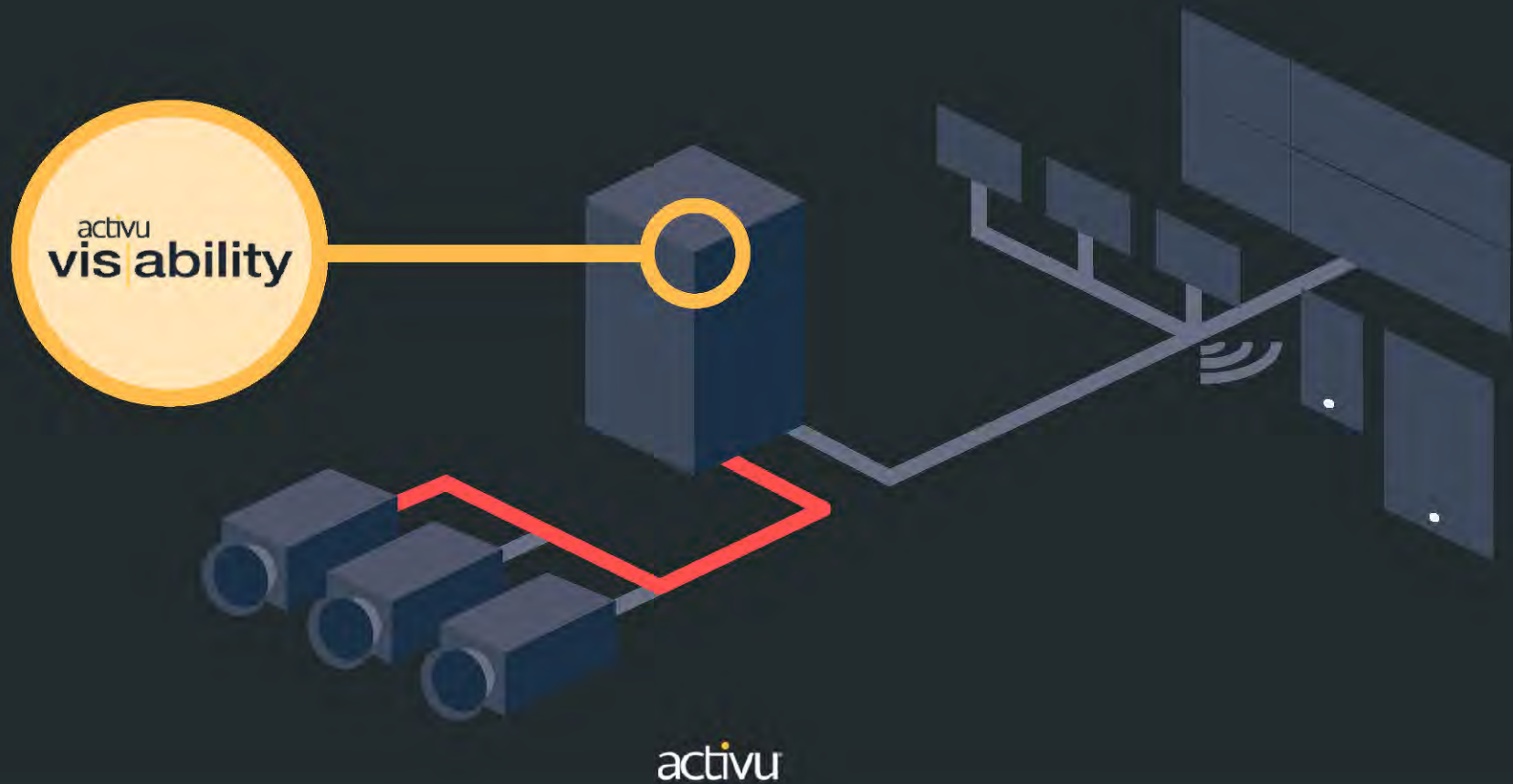


# EXAMPLE: vis|ability ingests an event from the network



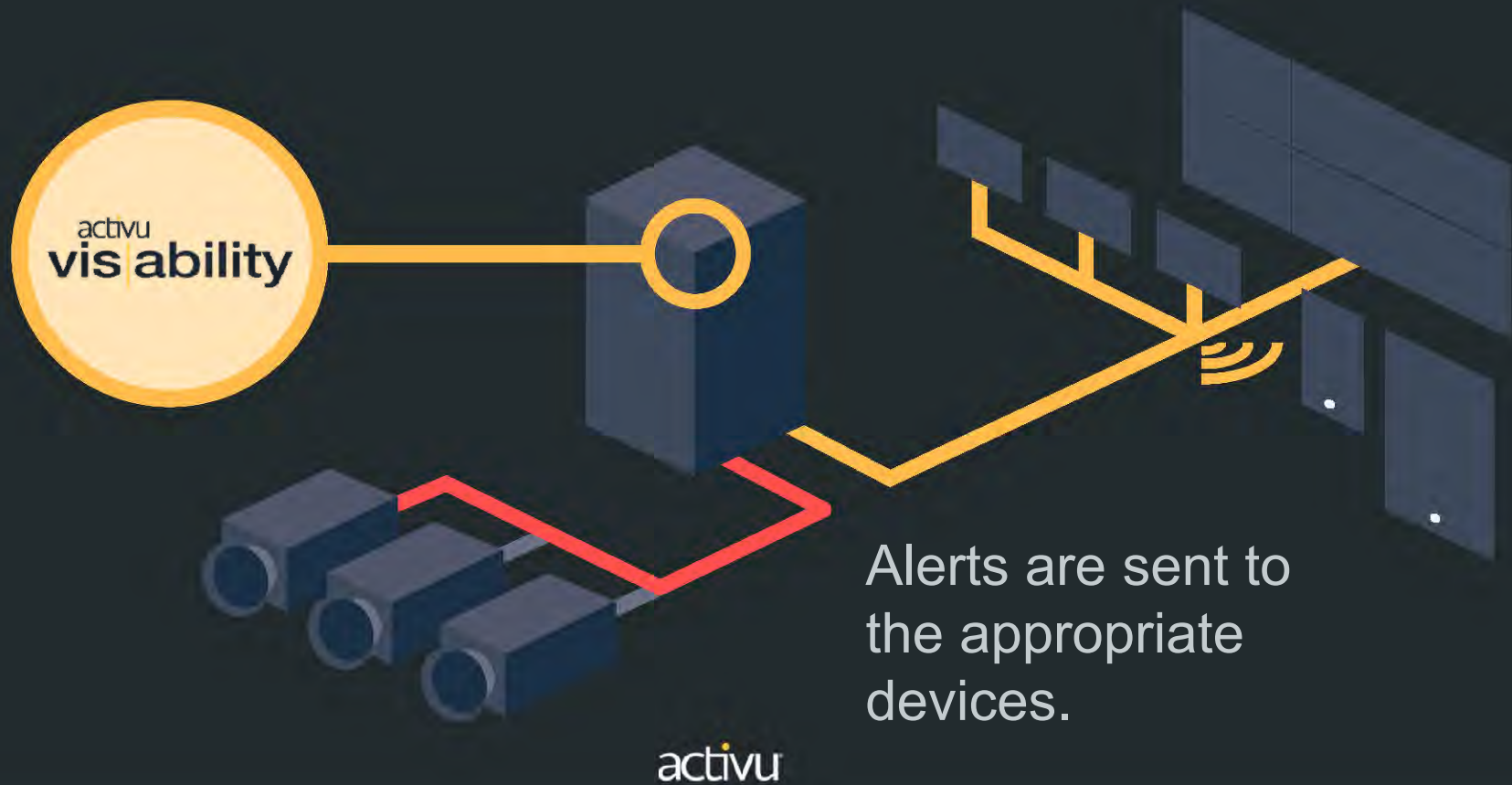
activu

vis|ability processes the input based on rules established for that particular kind of event



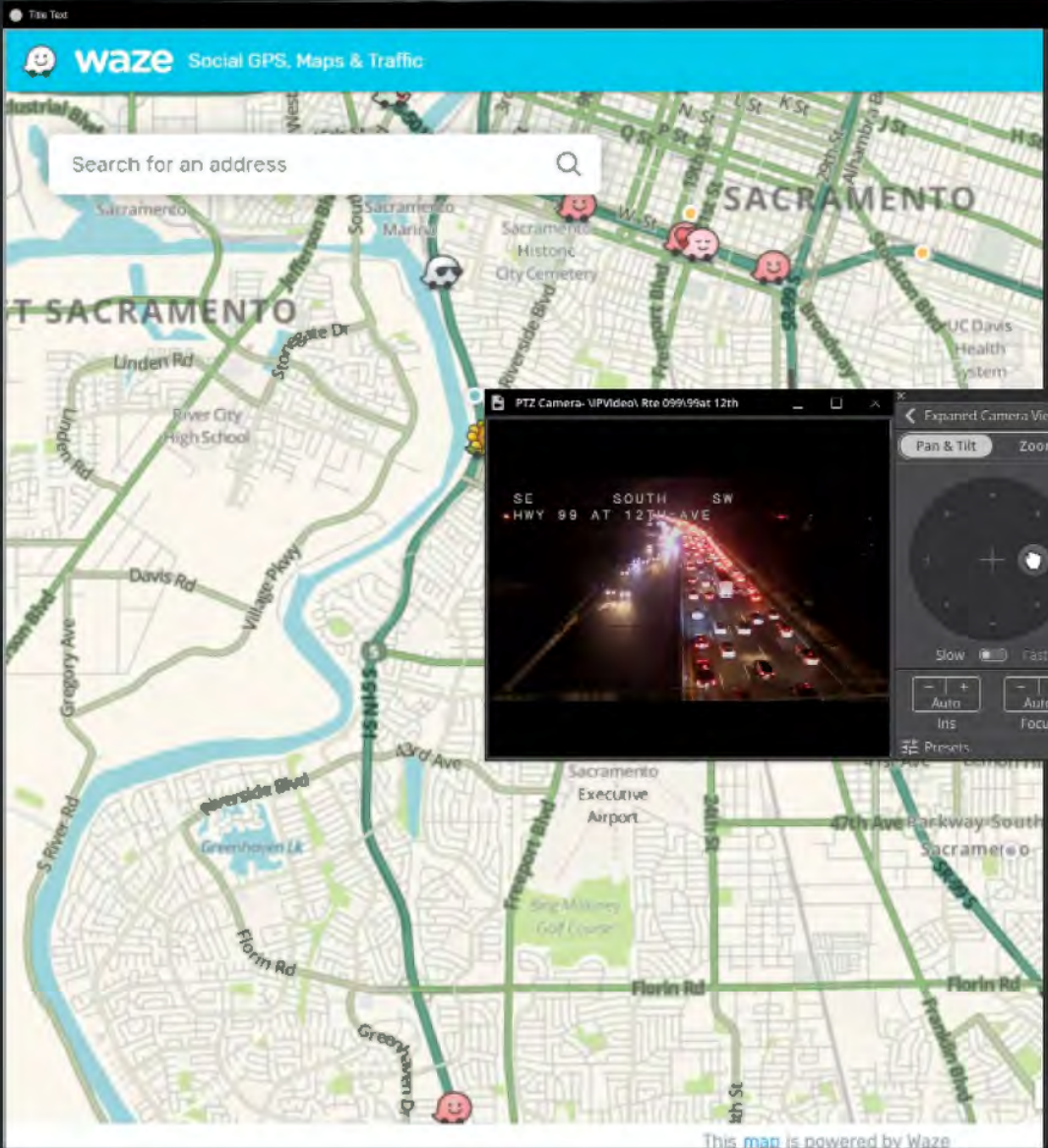


Displays automatically re-configure to show the relevant real-time content.



## WAZE Integration Case Study

- Traffic Managers at Caltrans are scored on how quickly they clear traffic incidents:
  - Time to recognition
  - Time to dispatch
  - Time to clear
- Quickly identify “anomalous” incidents
- Manage content on one or more video walls
  - Place map centered around incident
  - Position local cameras, if any, so that live video is also automated



Type: ACCIDENT

Reported On: 8/26/2019 9:08:53 PM

Location: SR-99 S, Sacramento

JAM Level: 4 - Standstill Traffic

JAM length: 1.7 mil

JAM From: [Empty]

JAM To: SR-99 S

Alternate Route: SR-99 S, Franklin Blvd Sacramento

Current Time: 132 min Speed: 132 min

Current Speed: 42 min Speed: 42 min

Report Time: 8/26/2019 9:08:53 PM

Accident Type: ACCIDENT

Accident Sub Type: ACCIDENT\_MAJOR

Accident Street: SR-99 S

Accident City: Sacramento, CA

Accident Waze ID: alert-1964320857cce53ce5-4648-3

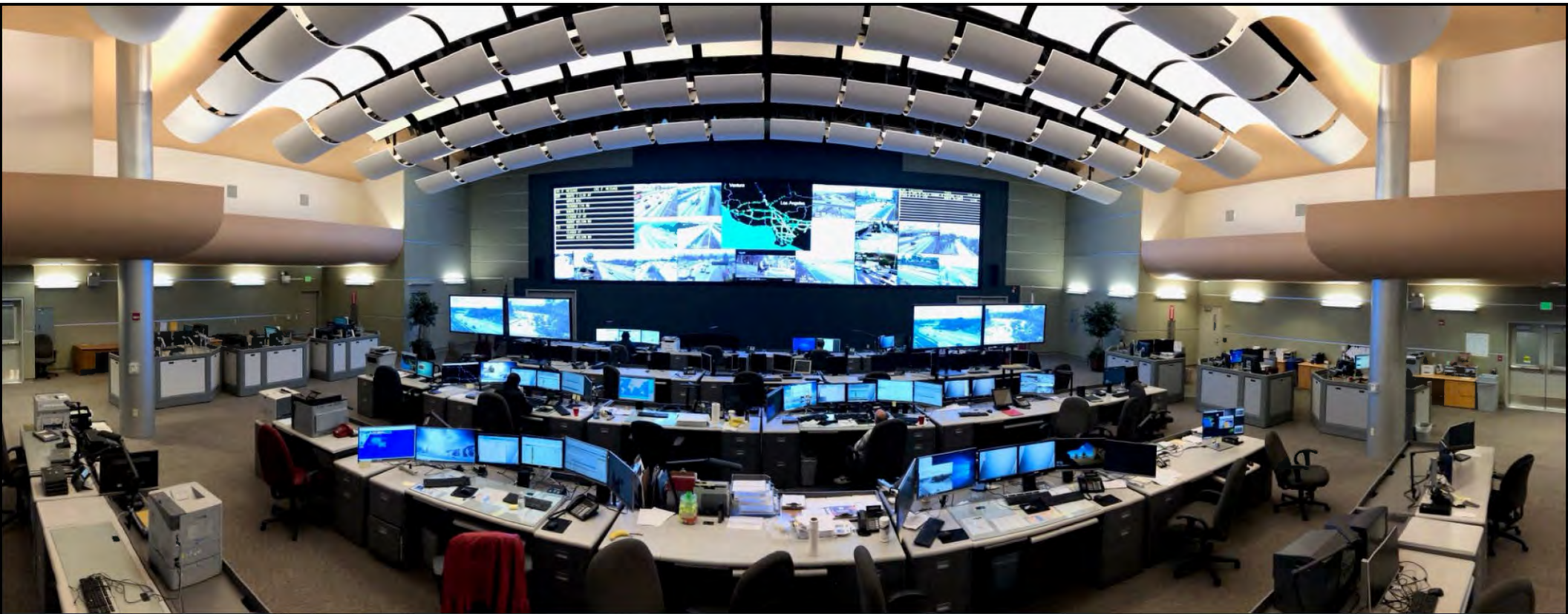
Comments from Waze users

Hotstar tag defines a...  
Full line level input control.

Camera	Location
VPVideo/Rte 089189 at Rampart	89 at Rampart
VPVideo/Rte 089189 at Rampart	89 at Rampart
VPVideo/Rte 089189 at Rampart	89 at Rampart

Wall Map Control





Caltrans District 7 – Los Angeles Regional Traffic Management Center (LARTMC)



activu<sup>®</sup>

EVENT-DRIVEN INTELLIGENT VISUALIZATION

