

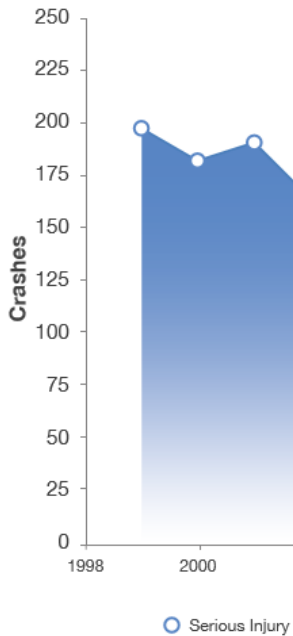
Management of Information

An aerial photograph of a highway interchange, likely in a desert region. The image shows multiple lanes of asphalt, concrete barriers, and a sign that reads "Brigham Rd 3/4 MILE" with "EXIT 4" above it. The background features a residential area with houses and a hillside under a clear sky. The entire image has a light blue tint.

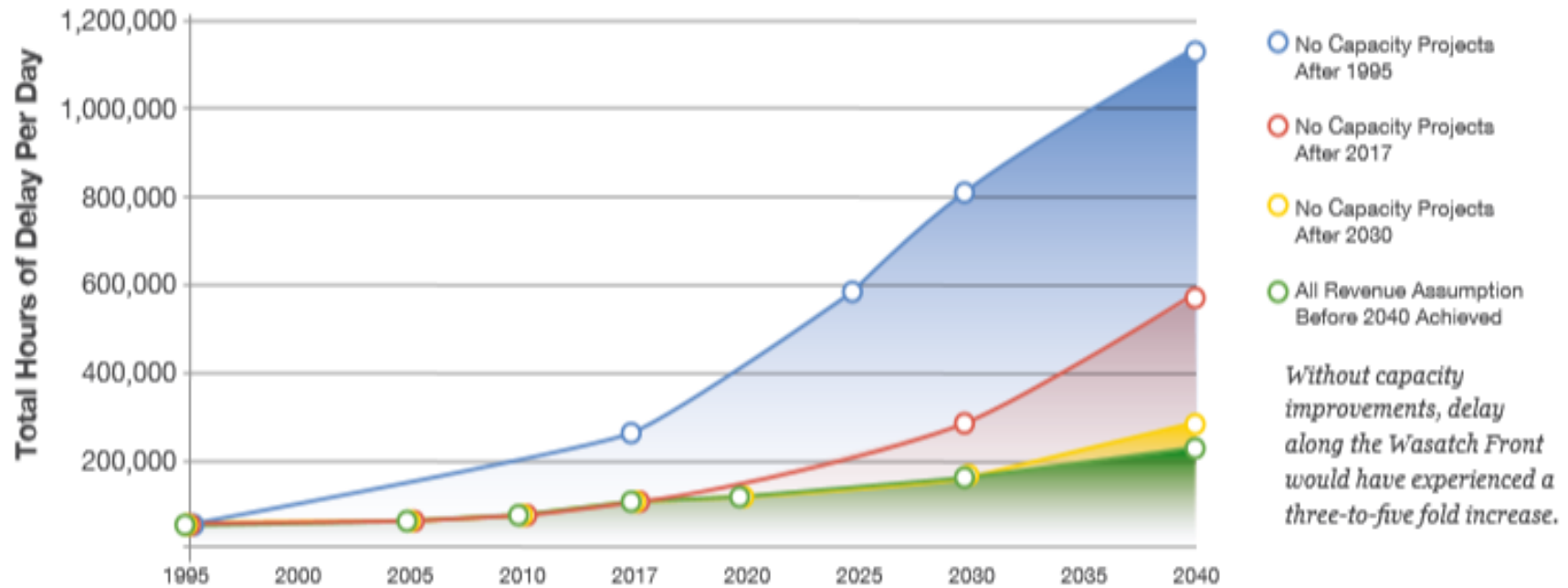
How agencies can Inventory Assets using Mobile LiDAR and Organize Information, such as; Safety, Projects, and Maintenance to Improve Agency's Business Decisions

How to Allocate Funding – Safety, Mobility, Preservation, and Capital Impr.

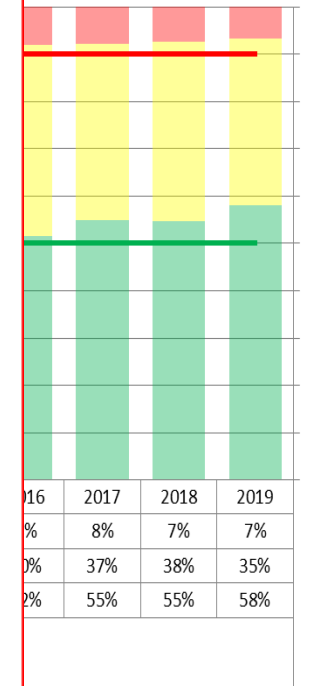
INTERSTATE SEVERE
A VE



DELAY ALONG THE WASATCH FRONT - DAVIS, WEBER, SALT LAKE & UTAH COUNTIES



1,845 SA)



And the Expected Performance

All the Assets
in this Image



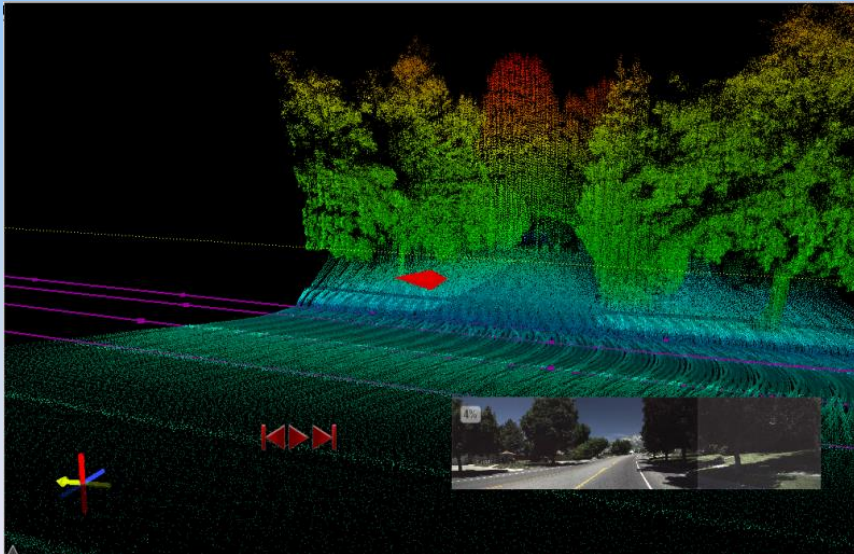
And All of
These



“Collect Once for Everyone”



3 HD Images (2400 X 3200) every 26.4 ft.

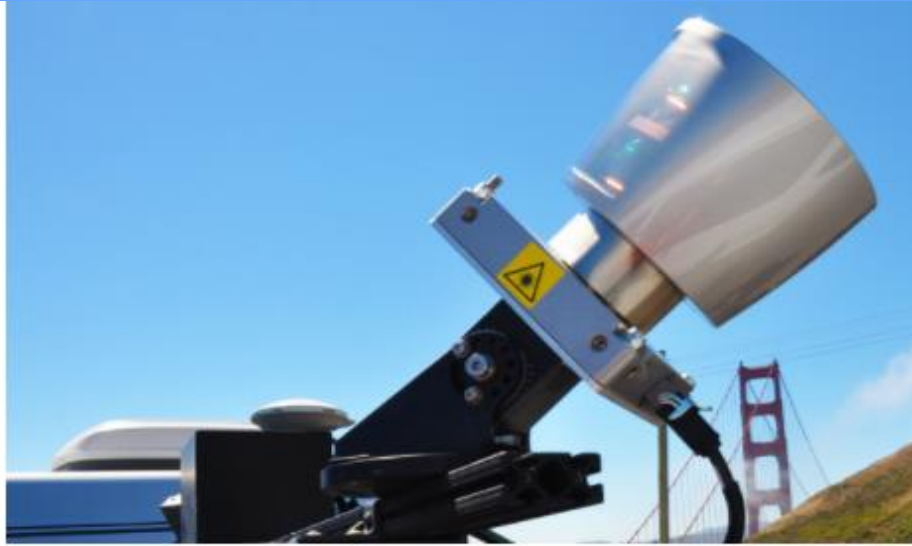


LiDAR – Geospatial Location of Features

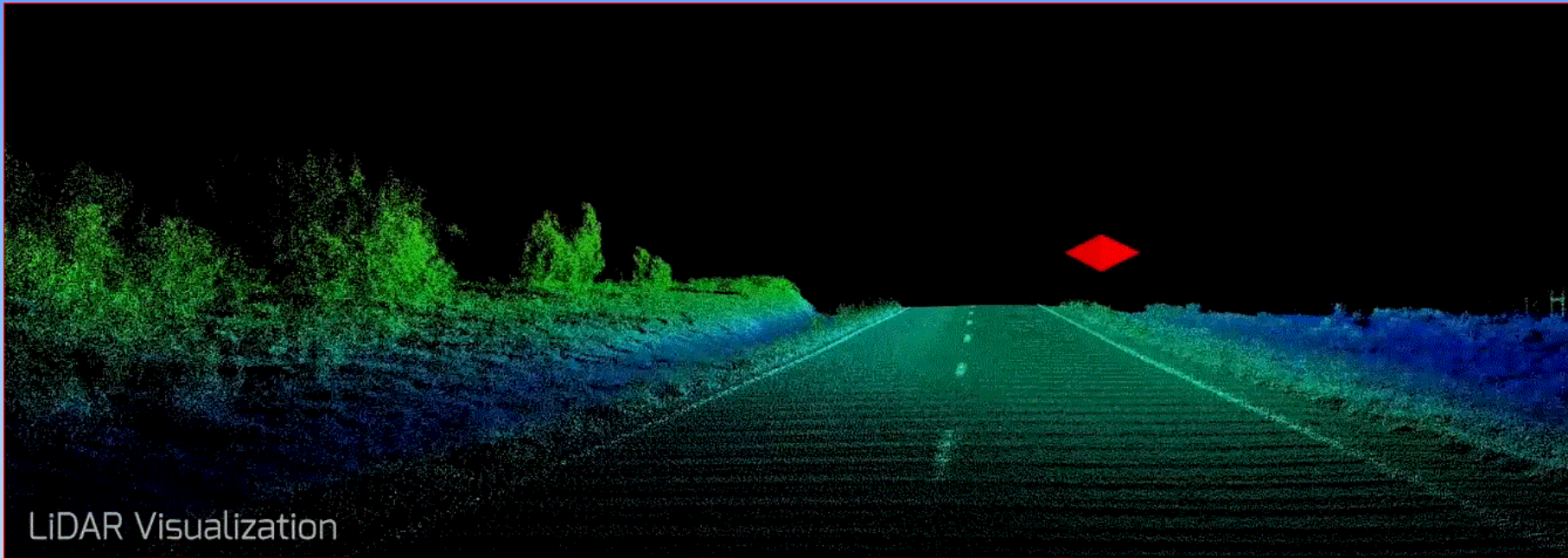
- Entire state highway system
- Both directions
- 5,869 centerline miles/ 14,000 driven miles

- Maintenance
- Traffic & Safety
- Structures
- GIS
- IT
- Motor Carriers
- Preconstruction
- ROW
- Regions
- Programming

“Collect Once for Everyone”



“Collect Once for Everyone”



LiDAR Visualization



Photolog Imagery

“Collect Once for Everyone”



UPlan

UDOT Map Center



CLICK REGION
TO VIEW GALLERY




app

LTDOT Snow Plow Tracking



app

LTDOT Live STIP Application



UDOT LRP 2015-2040

app

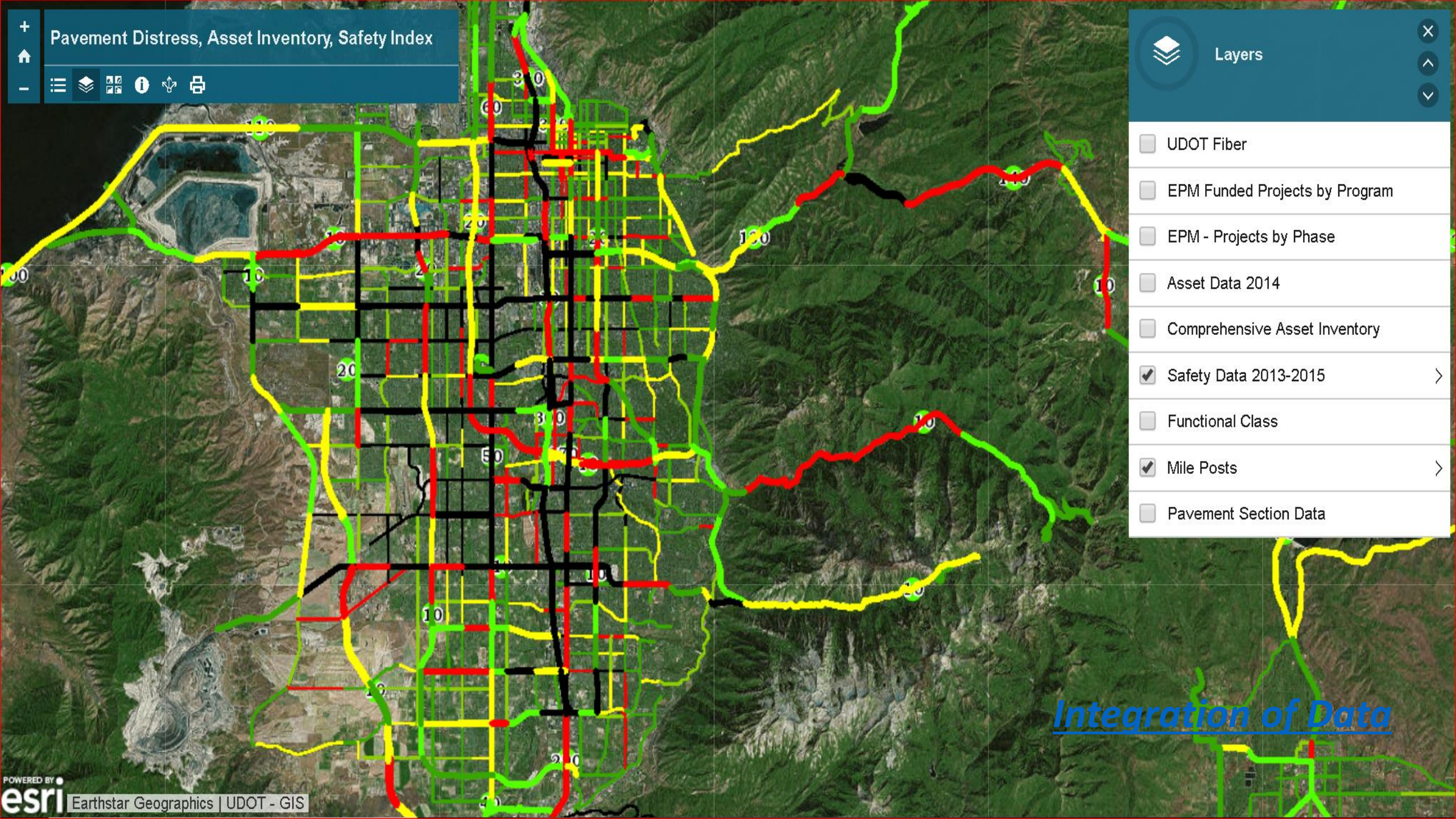
LTDOT LRP 2015-2040



app

LTDOT Mile Posts

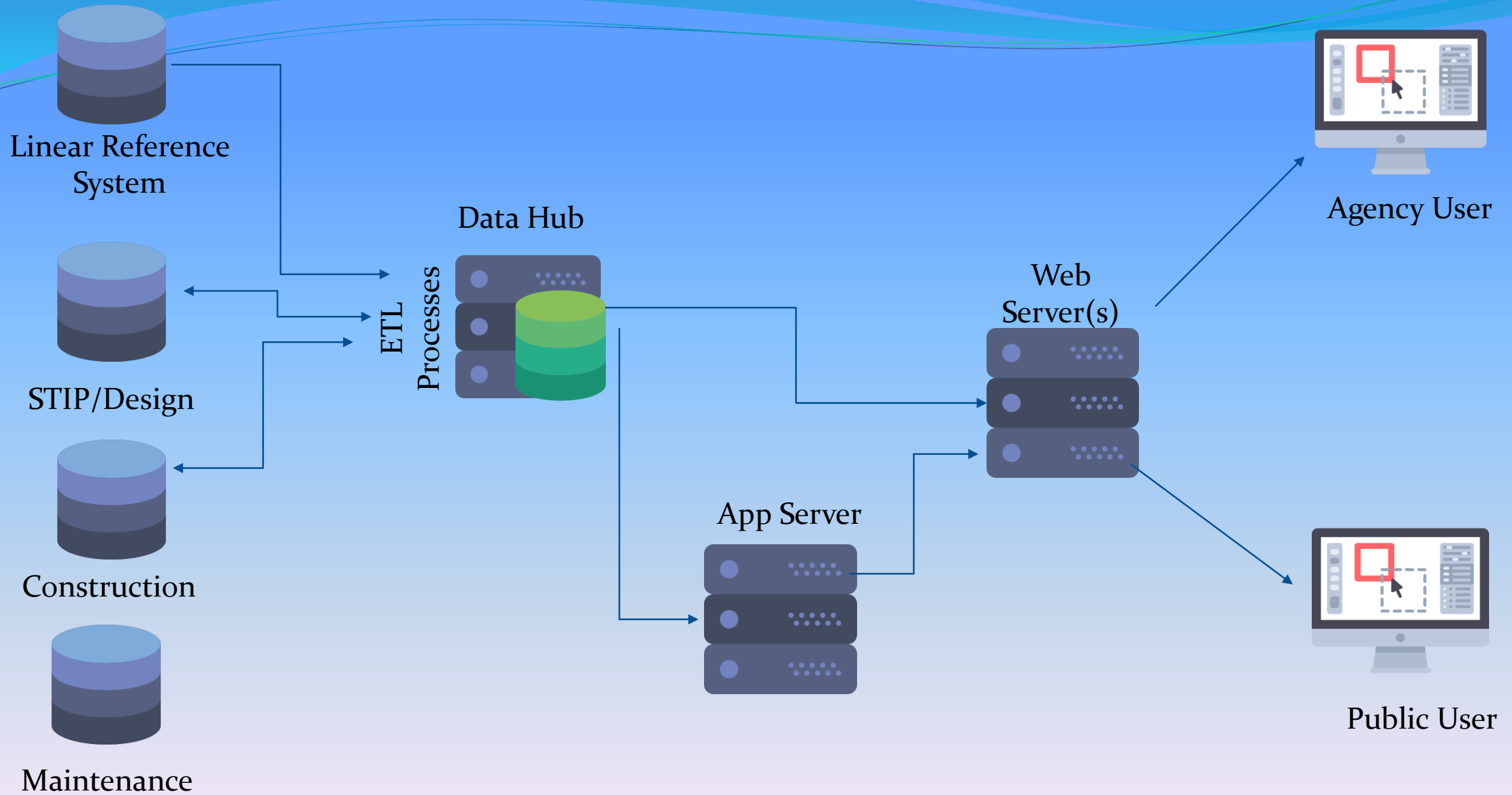
UDOT has 100's of items available on UPlan. Here are 4 common ways to search:

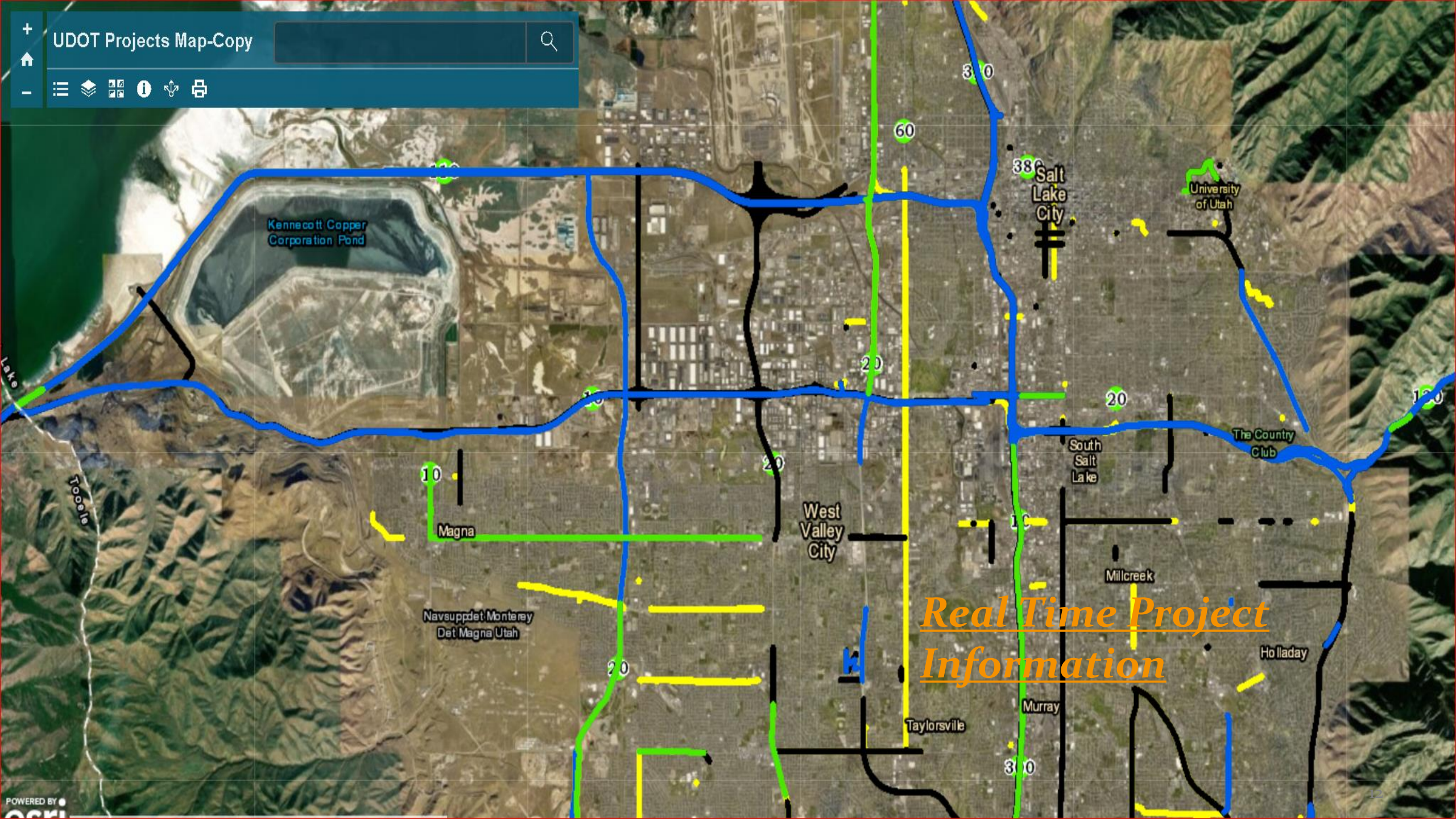


Layers

- UDOT Fiber
- EPM Funded Projects by Program
- EPM - Projects by Phase
- Asset Data 2014
- Comprehensive Asset Inventory
- Safety Data 2013-2015 >
- Functional Class
- Mile Posts >
- Pavement Section Data

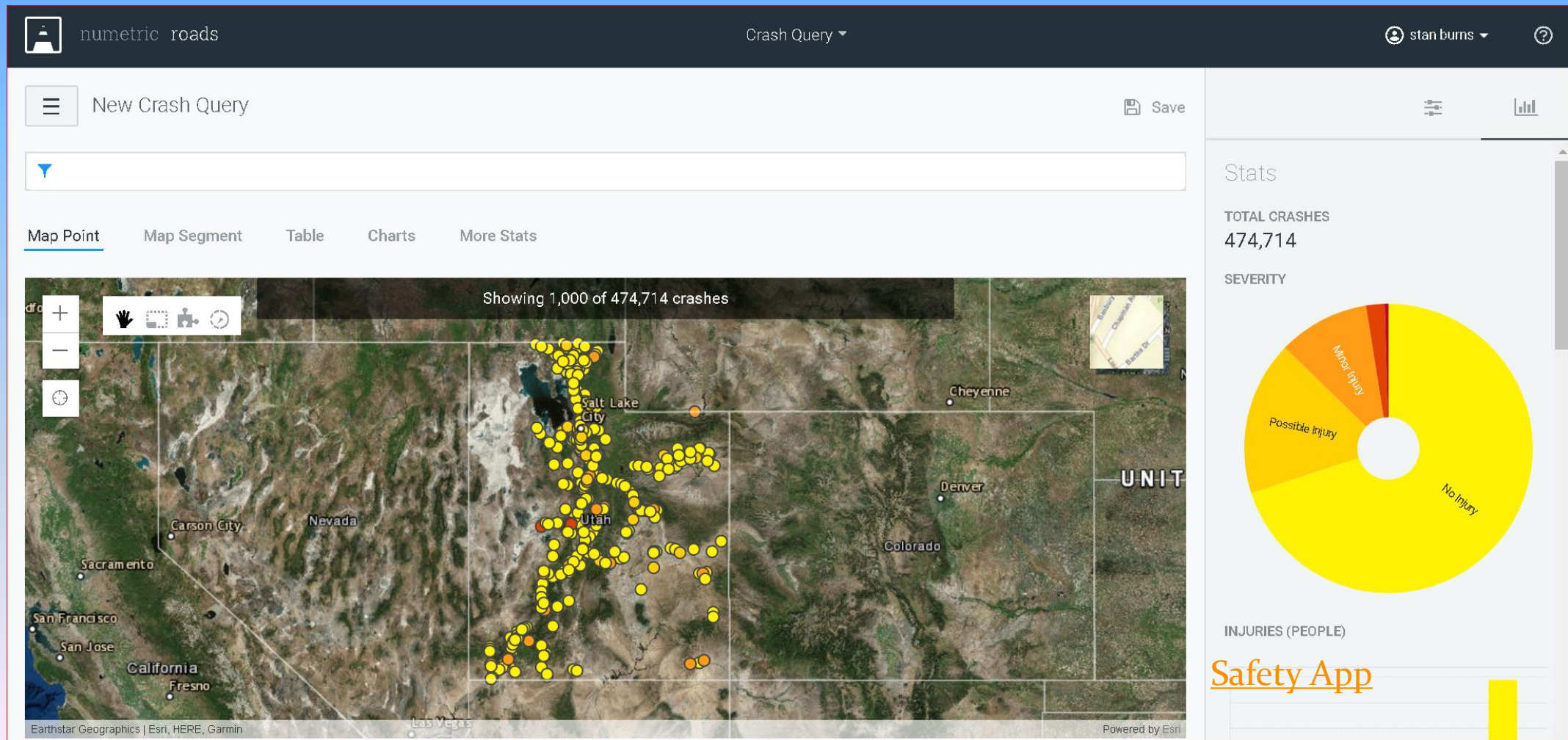
Integration of Data





Real Time Project Information

Example: Linking Safety and Assets



Thanks

Stan Burns
801 633 6221
sburns.integratedinvneory@gmail.com

MANDLI

Utah State Road 12

LiDAR and Photolog Timelapse Visualization